

# The Dispatcher

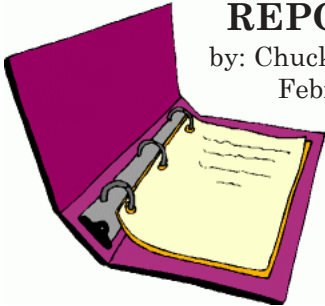
Northeast Hoosier  
Division 3 NCR

National Model Railroad Association



## SUPER'S REPORT

by: Chuck White  
February 2008



Hi everyone:

For this issue I would like to write a little about Special Interest Groups and railroad historical societies.

### SPECIAL INTEREST GROUPS

I belong to the Operations Special Interest Group and the Layout Design SIG. Membership in each of these organizations is \$15 "per year." I put per year in quotations because their memberships include four issues of their publications, which may cover portions of two different years. Both memberships are well worth the \$15. The magazines you receive are printed on glossy paper, comparable to any of the mainstream model railroad publications. The Layout Design SIG recently upgraded their "Journal" to a larger sized page format. It's now similar in size to the old Life magazine.

While most of the articles may be "over-the-top" for most of us, I'm finding all kinds of interesting tidbits as I read through them. For example, in the latest LD Journal, there's an article about Bill Neal's Pennsy

Layout up in SE Michigan. I've visited this layout, but didn't notice many of the details and finer points the author brought up in his article. I now have a much greater appreciation for what Bill has accomplished.

The Layout Design SIG's website is at <http://ldsig.org> There you will find links to all kinds of stuff including sections called Design Elements, Knowledge Base (Wiki), and a link to The Layout Design forum on Yahoo.

The newsletter for The Operations SIG is called The Dispatcher's Office, similar to the name for our own newsletter. In it I have found all kinds of stuff that has helped me with my interest in operations. This publication has had several very positive articles about the Three Rivers operations weekend's we have hosted in 2005 and 2007. In fact, the current issue mentions that we inspired a similar event down in North Carolina. It gives me a lot of pride to know that our efforts have had a positive influence on others. Additionally, each issue usually has one or two articles about prototype situations. The current issue has another article about the Hours of Service Law, which I found fascinating. Did you know that this law dates back to legislation Congress originally enacted in 1907? Initially the amount of time a railroad employee could be on duty was set at 16 hours. Imagine working that long in one day!

The Operations SIG's website is at

[www.opsig.org](http://www.opsig.org) There you will find a number of links as well; including a link to a list of over 100 layouts can visit as a member of the special interest group. However, you will need a password in order to gain access.

I noticed there are less expensive membership options for both SIGs. For \$5, either group will give you an electronic subscription, where you can download their Newsletter in PDF format. Back issues are also available for a very nominal fee. If you go back far enough in The Dispatcher's Office, you'll find an article published by yours truly.

### HISTORICAL SOCIETIES

I belong to the historical societies for the Milwaukee Road in Chicago North Western. I grew up near both these railroads, so like many of you; they are part of my model railroading area of interest.

I never really cared very much for the North Western. Their colors reminded me too much of a green beans and yellow corn vegetables that I was forced fed when I was a kid. However, their publication: "North Western Lines" has always been printed in color, on glossy paper, and for as long as I've been getting it, averages 64 pages. Here the membership is worth it, just for the pictures alone. They are just great. Still, I've found some really neat articles, including several on the Chicago Great Western, a railroad that was merged into the North Western back in the 60s.

**SPECIAL INTEREST GROUPS**

*(Continued)*

Membership in the C&NWHs is \$28 per year. This includes four issues of the NWL. For more information, you can visit their website at [www.cnwhs.org](http://www.cnwhs.org) here again is a excellent website with over a dozen links to archives, photos, information on shows, their annual convention, and so forth.

Membership in the Milwaukee Road Historical Association is \$25 per year. Again, the main reason for me belonging to this group is for it their excellent publication "The Milwaukee Railroader." It too has long been printed on glossy paper and with excellent color pictures. This magazine averages 48 pages with four issues published per year. Recently, as per the change with Scale Rails, publication for this magazine has been taken over by White River Productions. I've noticed this company is also publishing the magazines for several other historical societies. Looking at them in the hobby shops I visit in my travels to Chicago, they too are very good periodicals.

"The Milwaukee Railroader" usually features one town or city in each issue, with overhead photographs taken back in the 70s, by their company photographer, I think. These issues have also featured several articles about Milwaukee Road layouts, including Dan Lewis' in SE Michigan. For more information check out their website at: <http://www.mrha.com>


If anyone is interested in looking at back issues of these publications, let me know. I will be happy to loan them to you for you to peruse.



**1st Place Hobbies**  
117 E. Market St  
Bluffton, IN 46714  
[www.1stplacehobbies.com](http://www.1stplacehobbies.com)

- ◆ R/C Cars, trucks, planes, boats, (gas and electric
- ◆ Plastic model kits
- ◆ Model trains
- ◆ Rockets
- ◆ Paints & adhesives
- ◆ Kites

Phone: (260) 827-0765  
Fax: (260) 824-5509  
Mon-Fri: 10:00am-5:00pm  
Saturday: 12:00-5:00pm




**PHIL'S HOBBY SHOP**

|  |  |   |
|--|--|---|
| 3112 N. Clinton<br>Ft. Wayne, IN 46805<br>219-471-1340 | 422 Clinton Street<br>Defiance, OH 43512<br>419-782-8020 | 1722 Lake Avenue<br>Ft. Wayne, IN 46805<br>219-426-5056 |
|--|--|---|



**Meeting Location:**

Every month on the  
second Tuesday  
7:00 pm - 9:00 pm  
Church of the Covenant  
10010 N Coldwater Rd  
Just south of Dupont



*Please use the South-East Drive & Entrance*

*We thank these companies for their supporting the hobby.*

|   |  |  |
|---|--|--|
| <b>North Central Region NMRA<br/>Northeast Hoosier Division 3</b>                   |  |   |
|  | <p><b>Superintendent:</b> Chuck White</p> <p><b>Dispatcher:</b> Dan Metzger</p> <p><b>Treasurer:</b> Gene Cowan</p> <p><b>AP Chairman:</b></p> | <p><b>Board of Directors:</b><br/>Gary Evans</p> <p><b>Division Scribe:</b> Dan Brown</p> <p><b>Newsletter Editor:</b> Rich Mohr</p> |

Minutes January 8, 2008

### Attendance

Dan Brown, Gary Evans, Eddie Alien, Richard Moessner, Charles White, Rich Swihart, Walt Griffin, Brad Kinsey

North Central Division  
3 to Charles White and/or Richard Moessner.

Super's On why need to audit books.

### Fun Stuff

Railroad Books Prototype/Model  
Chuck The Chicago "L", Chicago Great Western, Wabash, The Milwaukee Road in Color Vol. 1 The East End  
Brad Erie Memories Walt Oct. 2007  
Railroad Journal article Great Northern in Montana. Walt designed track plan in article.  
Eddie Directory of Coal Mines and Coke Ovens Located on the B&O, N&W Williamson Terminal 1953  
Gary Indianapolis Union Terminal  
Dick National Geographic article Modern & Future Railroads  
Dick gave clinic on drawing track plans.

Annual Meet March 15th with clinics geared toward modelers.

Regional/National Toledo Convention Fast Freight 08.

2009 Regional Convention At Marriot Monday January 28th at 7PM.

### Old Business

Meeting location/date Tabled til later date.

Tony Romero's collection - Status Have some on e-bay.

### New Business

Continuation of Door Prizes  
NS 2008 calendar was donated and won by Walt.

Nominations open from the floor  
No new nominations. Motion to close nominations by Walt Griffin, 2nd by Eddie Allen.  
Motion carried.  
Balloting

Dick is going to check with Phil's and 1st Place Hobbies about buying gift certificates to give away at meetings.

### Clendar of Events

Swaps & Train Shows  
Send info to Gary to put in newsletter, if you have something to sell at meeting.

Motion to vote as nominated by Charles White 2nd by Richard Moessner.  
Motion carried.

Board of Directors Dave Miller  
Super Charles White

April 18th & 19th Model Railroad Symposium in South Bend.

### Announcements

Dispatcher Gary Evans  
Scribe Daniel Metzger

Fun Stuff for Next Time  
Bring any type unique car

Paymaster/Treasure Richard Moessner

### Reports

Treasures' none

Audit Committee  
Motion by Charles White and 2nd by Brad Kinsey. Motion carried for The City County Fire Police Federal Credit Union disclose all accounts to NMRA

# Wabash Motors

by Gary Evans

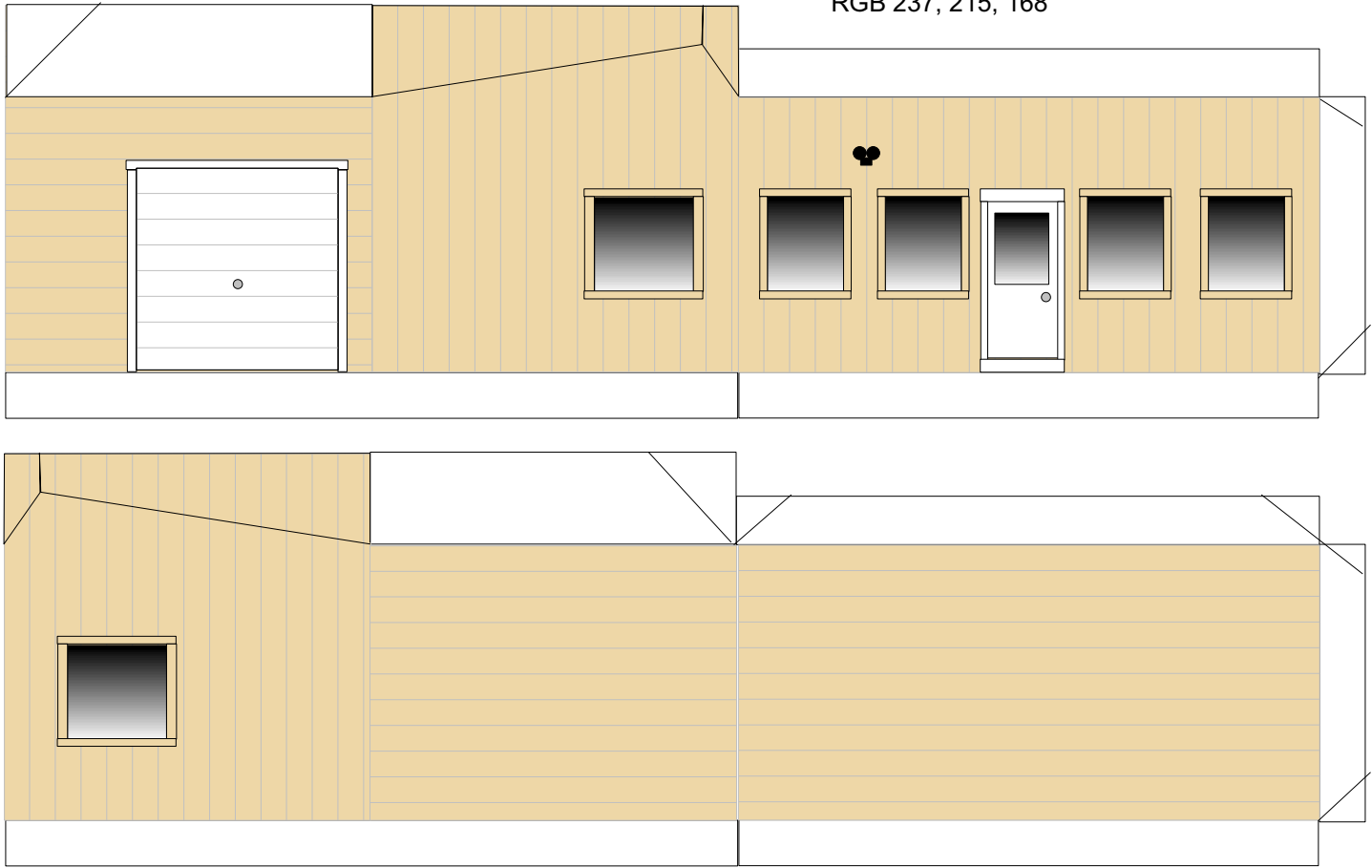
Wabash Motors is located on Margaret Avenue on the south side of Terre Haute, Indiana. Way back when (1950's), the property hosted a fuel oil terminal, complete with a siding to the adjacent New York Central railroad, vertical storage tanks, and a pumping station to load trucks. Some time later, a passenger car filling station was built. The remains of the Zephyr sign still stand on the north side of the property. The building has existed as a used-car dealership for many years – sometimes open and sometimes closed. Currently, the building is being painted and refurbished. The unpainted wooden shed requires much work to make it presentable. The name Wabash Motors is new to the property. Margaret Avenue is slated for widening sometime in the future; it is likely that the building will be demolished since its parking area will be gone.

The basic building has outside dimensions of 23 feet wide by 28 feet deep. It has cinder block construction in the rear and vertical wood siding in the front. The roof is flat across the structure and slopes to the rear. Refer to the pictures below. The measuring stick is 6 feet tall.

The model artwork is intended for mounting on cardstock. It is a basic, quick, cheap representation of the building and does not include the shed.



RGB 237, 215, 168



This freely-distributed drawing is original artwork.

Wabash Motors  
Page 1 of 1.

